

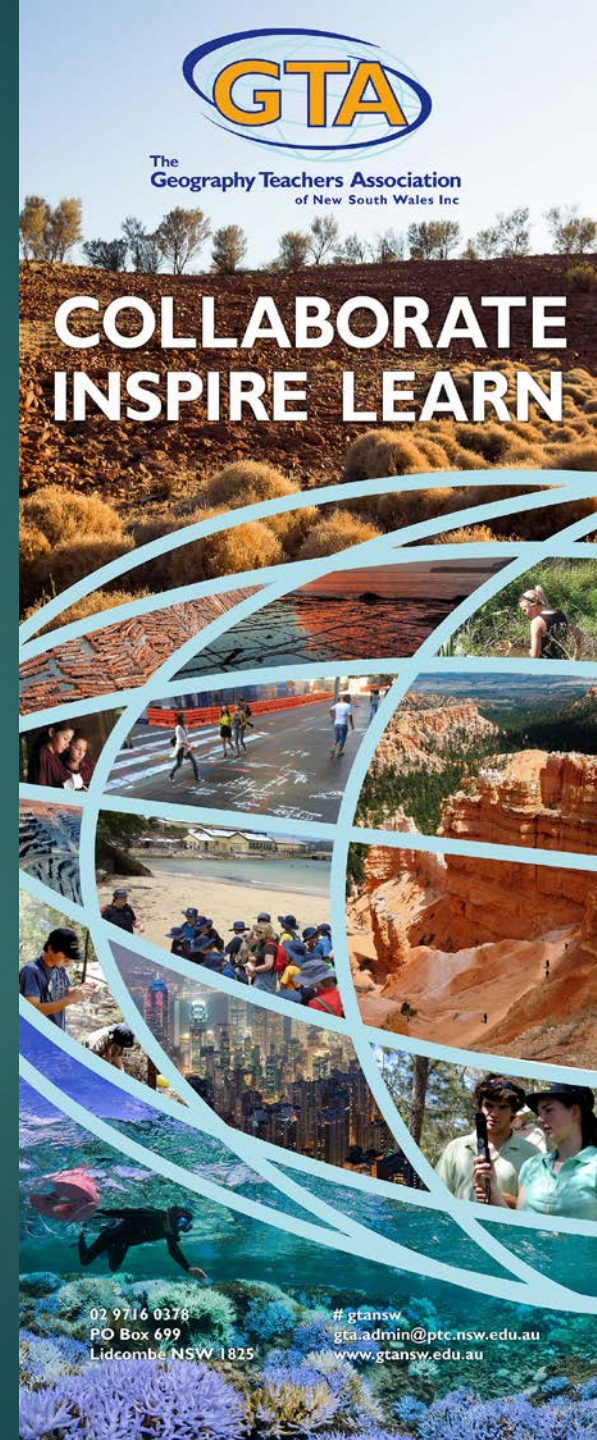
SENIOR GEOGRAPHY TEACHER CONFERENCE

GTA NSW
NOVEMBER 2017



The
Geography Teachers Association
of New South Wales Inc

**COLLABORATE
INSPIRE LEARN**



02 9716 0378
PO Box 699
Lidcombe NSW 1825

#gtansw
gta.admin@ptc.nsw.edu.au
www.gtansw.edu.au

WELCOME

WHY ARE WE HERE?

Collaborate, Inspire and Learn

YOU ARE A GEOGRAPHER - THIS IS YOUR MISSION. INVESTIGATE THE WORLD AROUND YOU. SEEK OUT NEW EXPERIENCES. SHARE THEM. EXPLORE ISSUES IN DETAIL. BE CRITICAL. CHALLENGE THE EVIDENCE THAT IS PUT IN FRONT OF YOU. FIND AN ALTERNATIVE VIEWPOINT. PUT YOURSELF IN THEIR SHOES. ASK REALLY GREAT QUESTIONS. CREATE REALLY GREAT ANSWERS. ABOVE ALL, ALWAYS BE THE BEST GEOGRAPHER THAT YOU CAN BE.

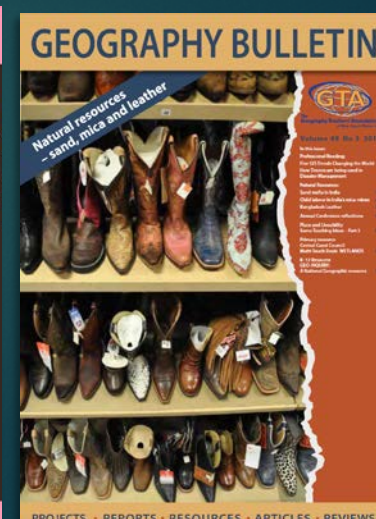
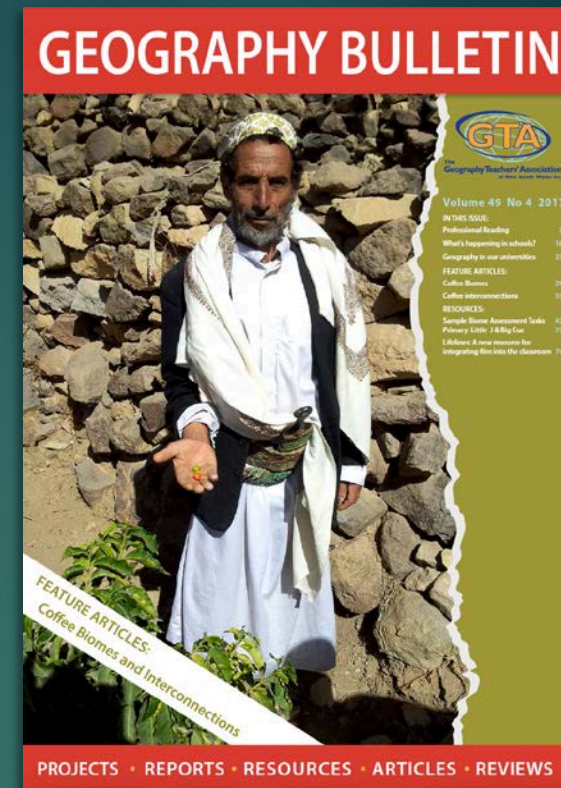


#LOVEGEOGRAPHY

Simon Jones

GTA NSW Plans for 2018

- ▶ **Annual Conference April 9th and 10th**
 - Senior Geography (Dedicated room x 2 days)
 - 2017 HSC Review (Twilight workshop)
- ▶ **HSC Exam preparation Days**
 - Sydney x 2
 - Newcastle & Goulburn
- ▶ **Regional Conferences**
 - Tweed Heads
 - Canberra
- ▶ **GIS Training**
 - Sydney x 2
 - Regional x 2 or 3
- ▶ **Webinars**





PART 2: BIG DATA – A changing world

'Open Data' in a Big Data world
Open Data refers to everyone, everywhere, everyday possessing access to 'all' data. This aims to prevent discrimination and promote transparency and accountability. Of the 4.3 billion people without access to the internet, 90% live in developing countries, mostly in rural remote locations. Access and use of ICT is required to penetrate remote areas in all countries to enable sustainable development.

PART 1: BIG DATA – Products & services

Dr Susan Bliss
Educational consultant
Author, Macmillan Australia

Image source: <https://media.licdn.com/mp1/mp1/p/4/005/09e/055/267kd22.png>

'History has taught us that nothing is constant but change'
Geography Syllabus Links large companies to be broken up, as experienced

PART 3: UNDERSTANDING BIG DATA – Student activities

Dr Susan Bliss

Global interactions in this article.
essential for the achievement of the SDG? How can Big Data from satellite imagery aid the progress of the SDG?
Communications
Explain what is meant by geospatial data and why it is important to future management of the environment.

THE GLOBAL AND LOCAL ECONOMICS OF THE AUSTRALIAN BANANA INDUSTRY

Rae Dufty-Jones
Senior Lecturer in Human Geography, Western Sydney University

Introduction
When Cyclone Yasi hit Far North Queensland (Qld) in 2011 we saw over 50% of the nation's banana production wiped out. Subtropical banana growers in South-Eastern Qld and Northern New South Wales (NSW), usually the poor cousin producers of their Far North Queensland counterparts suddenly found their product in huge demand.

PEOPLE & ECONOMIC ACTIVITY

STARBUCKS

PEOPLE & ECONOMIC ACTIVITY

GLORIA JEAN'S

Dr Susan Bliss

TOWARDS SUSTAINABLE COFFEE

PNUD Peru, June 2011

Source: <https://pnudperu.exposure.co/towards-a-sustainable-coffee>

TOWARDS SUSTAINABLE COFFEE

Green Commodities Program



DAIRYING

Presenters

Matt Carroll

Grace Larobina

Dr. Grant Kleeman

David Latimer

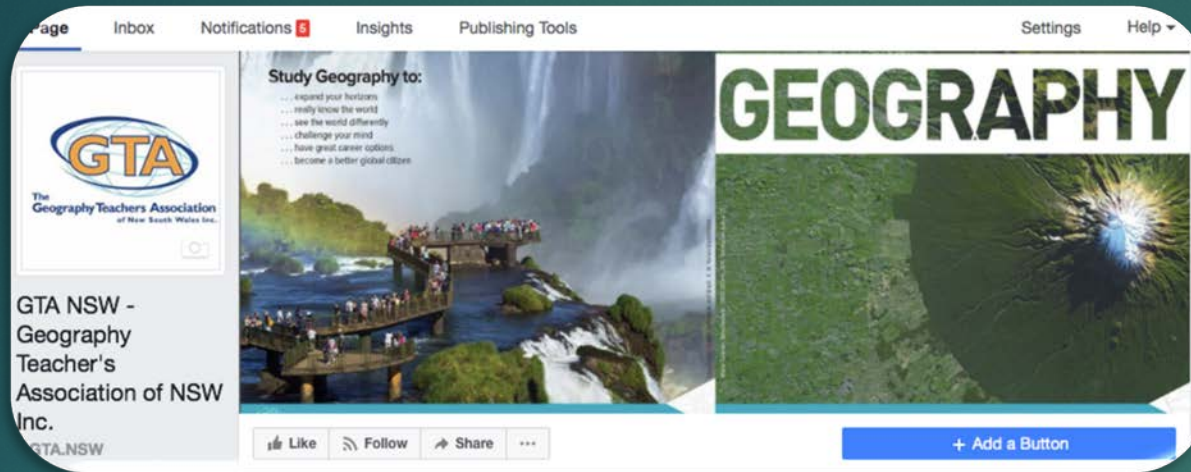
Alexandria Lucas

Martin Pluss

Andrew Toovey

TIME	Session
8.30 – 9.00	Registration Coffee, Tea
9.00 – 9.10	GTANSW welcome Conference opening
9.10 – 9.40	Busting the bands
9.40 – 10.10	Organising a successful SGP and why it matters
10.10 – 10.30	Morning tea HERITAGE ROOM
10.30 – 11.00	Global trends and change
11.00 – 11.30	Mastering difficult skills
11.30 – 12.00	People and economic activity. Introduction and Short answer questions
12.00 – 1.00	Teach meet style session in 5 small groups (40 mins) Leaders facilitate discussion. Feedback to whole group 20 minutes
1.00 – 1.45	LUNCH HERITAGE ROOM
1.45 – 2.15	Sharing and going local
2.15 – 2.45	Using technologies to build knowledge and understanding. Demonstration.
2.45 – 3.15	Panel led by Lorraine Questions, Resource, Strategies
Closure	What next? What can GTA do to further support senior Geography Teachers?

GTA and SOCIAL MEDIA



#GTANSW



Google Drive shared folder



Files

Name ↑

2001 HSC Geogra...

Year	Population (000)	Population Density (per km ²)
1980	11,000	11
1985	12,000	12
1990	13,000	13
1995	14,000	14
2000	15,000	15

2002 HSC Geogra...

2003 HSC Geogra...

2003 HSC Geogra...

2004 HSC Geogra...

2005 HSC Geogra...

2005 HSC Geogra...

2006 HSC Geogra...

2007 HSC Geogra...

2008 HSC Geogra...

Annual conference 2018

A call for presenters

- Content 7 – 10
- Pedagogy and skills
- ICT
- Senior Geography



GTA WEBSITE

GTA NSW
Geography Teachers' Association of New South Wales Inc.

HOME PUBLICATIONS RESOURCES SUPPORT NEWS MEMBERSHIP ABOUT GTA NSW

HOME PAGE [Member login](#)

UPCOMING EVENTS

GTA REGIONAL CONFERENCES: COLLABORATE, INSPIRE, LEARN


The Regional Conferences will focus on aspects of the new NSW Geography Syllabus for Stages 1 to 5 including programming, fieldwork, assessment, inquiry based learning, spatial technologies and skills and tools.

DATE AND LOCATION
WAGGA WAGGA: GTA NSW / RivSSTA Conference. Details to be confirmed.

COST: \$180 member \$220 non-member

>> Further details and registration form available shortly

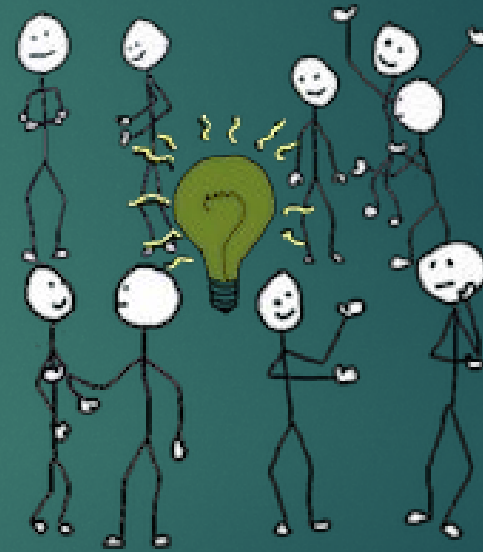
ARTHUR PHILLIP AWARDS 2017: GEOGRAPHY FIELDWORK COMPETITION

 **GTA NSW**
on Facebook



REGIONAL NSW STIMULUS BOOKLETS
WITH SKILLS QUESTIONS and ANSWERS

Ideas from the panel



Scoop.it

The screenshot shows the profile of Lorraine Chaffer on Scoop.it. At the top, there are navigation links for SOLUTIONS, PRICING, RESOURCES, BLOG, and SIGN UP. The profile header includes a circular profile picture of Lorraine Chaffer, her name, and a 'Business' tag. Below the name is a bio: 'Experienced NSW Geography Teacher 7 - 12 and Geography Education Consultant. 2017 President GTANSW. Contributing author Macmillan GeoWorld 7-10 series textbooks for the NSW syllabus and Australian Curriculum'. To the right of the bio, it shows '50.2K views' and '+25 today'. Below this, there are sections for 'People sharing Lorraine Chaffer's interests' and 'Lorraine Chaffer's Interests', with 'Geography' listed as an interest. The main content area is divided into 'Curated Topics', 'Curated Scoops', 'Followed Topics', 'Followed Scoops', and 'Lorraine Chaffer's Commu...'. Under 'Curated Topics', there are three featured topics: 'Lorraine's Sustainable Biomes (NSW) ...', 'Lorraine's Place and Liveability', and 'Lorraine's Human Well Being', each with a representative image.

This block displays a grid of six Scoop.it content cards. The first card, 'Lorraine's Environmental Change & M...', features a woman in a blue wetsuit surfing. The second card, 'Lorraine's Geography SKILLS and ICT', shows a coastal town with a large building. The third card, 'Lorraine's Geography Teaching ideas', depicts a cave with stalactites. The fourth card, 'Lorraine's Sustainable Biomes (NSW) ...', shows a person in a boat on a lake at sunset. The fifth card, 'Lorraine's Place and Liveability', shows a modern city skyline. The sixth card, 'Lorraine's Human Well Being', shows a young girl working with fabric. The bottom row of cards includes a card for 'Transform how students showcase their learning' with Adobe Spark Page and Video logos, and a card for 'PEN Principle #9' which features a circular diagram with 'Active Recall Trumps Passive Review' in the center, surrounded by 'Neuroscience', 'Psychology', and 'Education'.

Lorraine's Water in the World
Resources linked to NSW Geography Syll...



NSW Senior Geography (Current syllab...



Lorraine's NSW Primary Geography



Aboriginal and Torres Strait Islander ...
For NSW Geography teachers implementing t...



Natural and ecological hazards



Lorraine's Riverine Environments Sta...



From you



<https://www.nngroup.com/articles/group-ideation/>



Where to from here ...?

Stay connected